



TAL STONE FENCE
Verti-Crete® precast privacy fences and sound walls



TANKS-A-LOT
onsite water and sewage solutions



S3 PRECAST PRODUCT BOOK



SERVICE | SOLUTIONS | SUSTAINABILITY

S3PRECAST.COM



90,000 sq.ft.,
CSA Certified,
Automated batching
High-throughput Manufacturing

TABLE OF CONTENTS

02

600mm CATCH BASINS

03

900mm CATCH BASINS

05

1200mm MANHOLES

07

PREBENCHED MHs

08

LARGE DIAMETER MANHOLES

09

GRADE RINGS

12

BOX SECTIONS

13

STORMWATER TANKS

14

PRECAST TRENCHES

15

PRECAST BARRIERS

16

OIL AND GRIT SEPARATORS

17

PRECAST FENCES

18

PRECAST TANKS

19

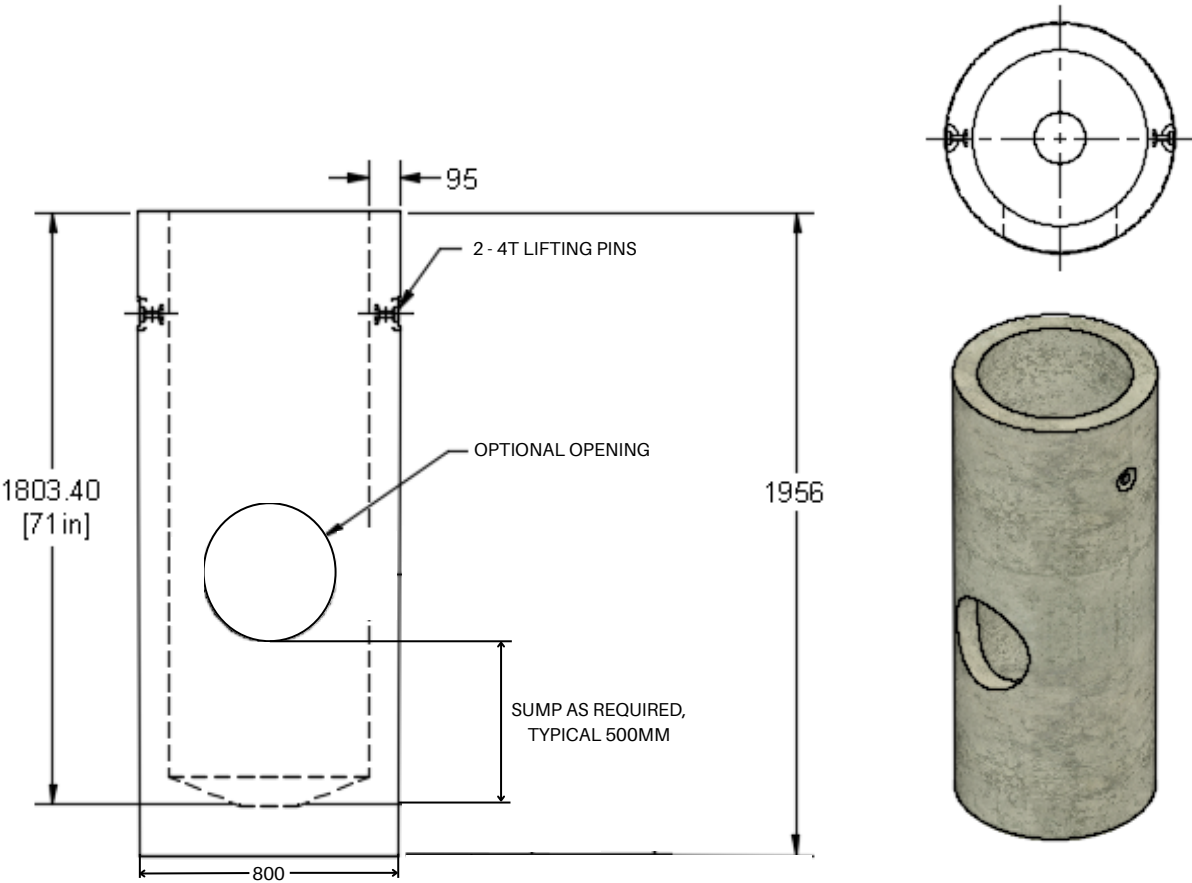
iQ.MBBR™ FOR COMMERCIAL
WASTEWATER TREATMENT



780-472-8265

53251 RR 232, SHERWOOD PARK, AB

CATCH BASINS – 600MM

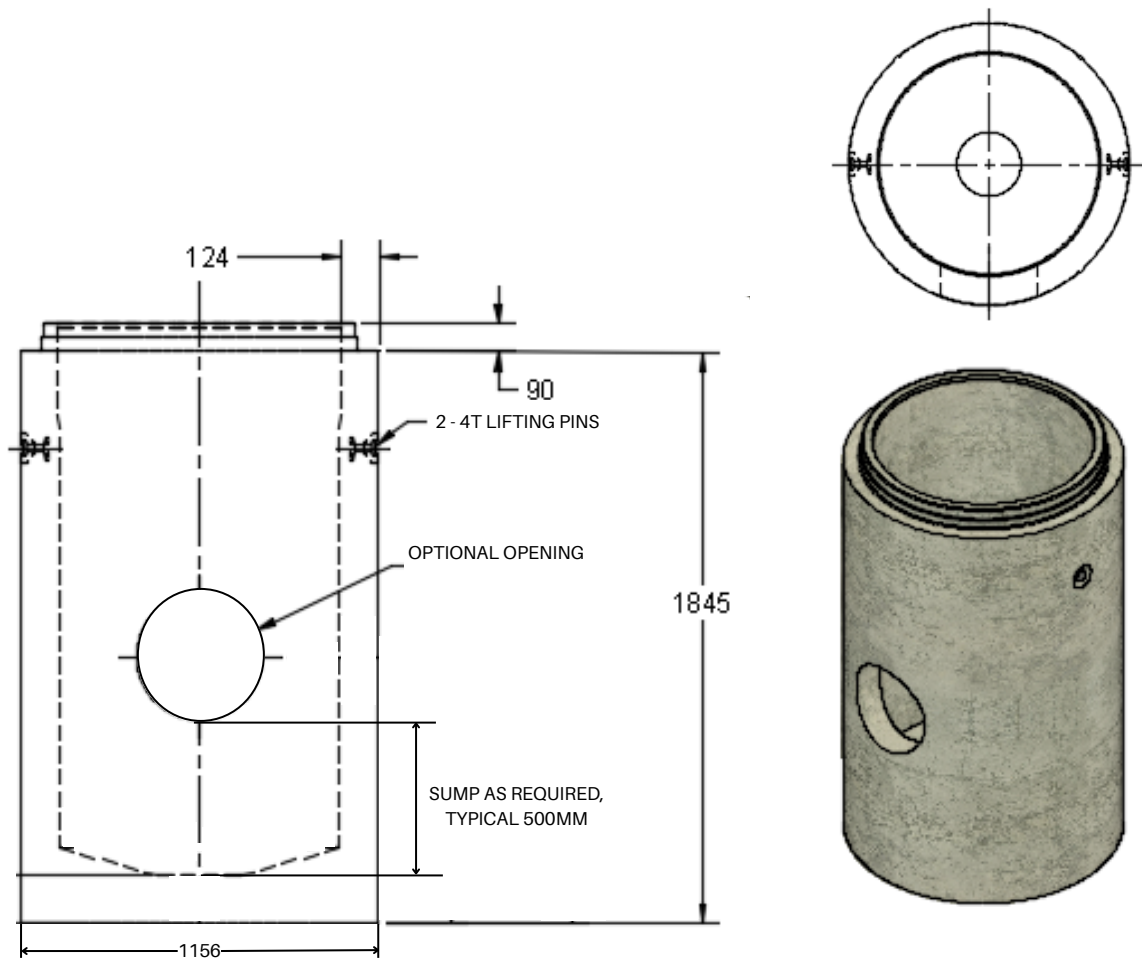


ITEM	WEIGHT (KGS)
600MM X 1.95M CB W/ MONOLITHIC BASE	1007
600MM X 1.22M LID CB W/ MONOLITHIC BASE	630

NOTE
600mm CBs
DESIGNED TO
HAVE GRADE
RINGS SIT
DIRECTLY ON
BARREL



CATCH BASINS – 900MM

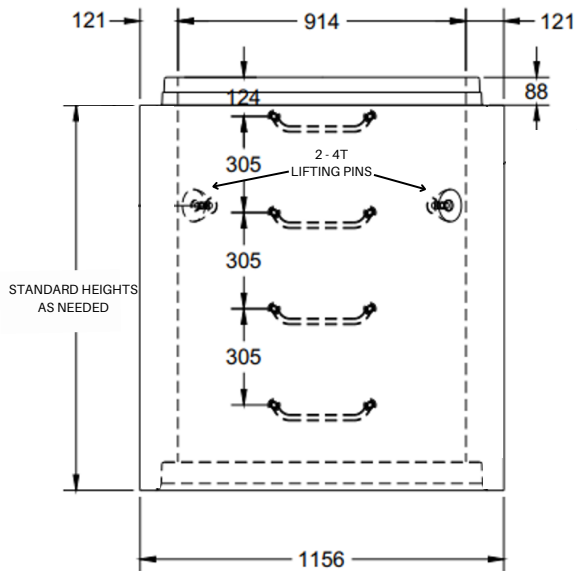


ITEM	WEIGHT (KGS)
900MM X 1.83M CB W/ MONOLITHIC BASE	2017
900MM X 1.22M CB W/ MONOLITHIC BASE	1436
900MM X 1.83M CB EXTENSION BARREL	1743
900MM X 1.22M CB EXTENSION BARREL	1162
900MM X 0.61M CB EXTENSION BARREL	581

NOTE
900mm MATERIAL
AVAILABLE WITH
OR WITHOUT
STEPS



CATCH BASINS – 900MM

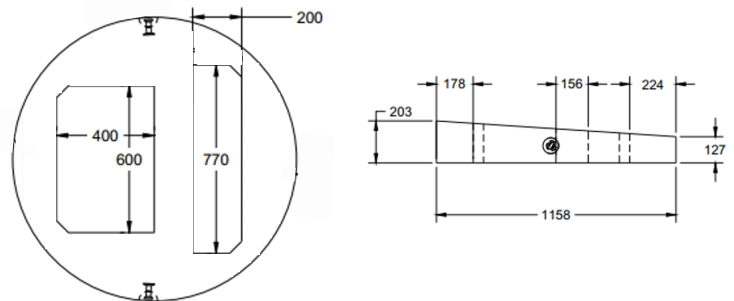


900MM CB EXTENSIONS

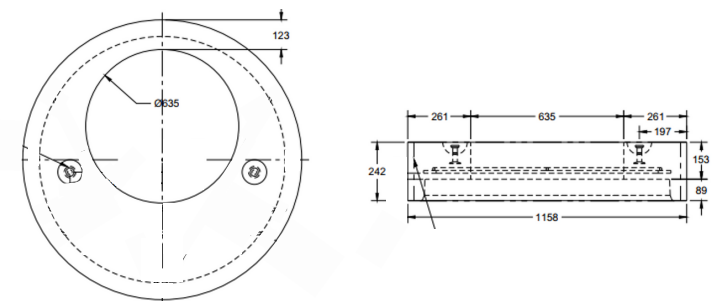
ITEM	WEIGHT (KGS)
900MM X 0.30M CB BARREL	290
900MM X 0.61M CB BARREL	581
900MM X 1.22M CB BARREL	1162
900MM X 1.83M CB BARREL	1743

900MM TOPS

ITEM	WEIGHT (KGS)
900MM TEE TOP	226
900MM SLAB TOP W/ 635MM OPENING	311
900MM SLAB TOP W/ 910MM OPENING	191



900MM TEE TOP



900MM SLAB TOP W/ 635MM OPENING



1200MM MANHOLES

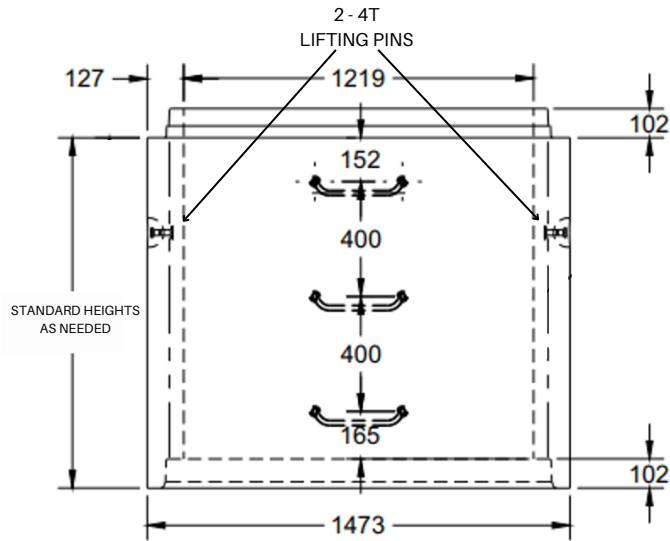
ITEM	WEIGHT (KGS)
1200MM BASE SLAB	736
1200MM X 0.30M BARREL	385
1200MM X 0.41M BARREL	526
1200MM X 0.81M BARREL	1040
1200MM X 1.22M BARREL	1566
1200MM X 1.0M CONE TOP	1370
1200MM SLAB TOP W/ 635MM OPENING	565
1200MM SLAB TOP W/ 910MM OPENING	445
1200MM SPIGOT-TO-SPIGOT OR BELL-TO-BELL ADAPTOR	336

NOTES

- All barrels come with self-lubricating gaskets
- 1200mm material requires 2 - 4T lifting clutches to properly lift and assemble
- MHs manufactured to CSA A257.4 standards



1200MM MANHOLES

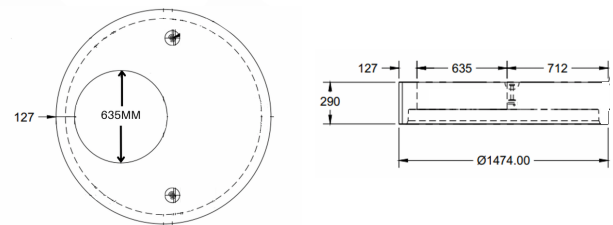


1200MM BARRELS

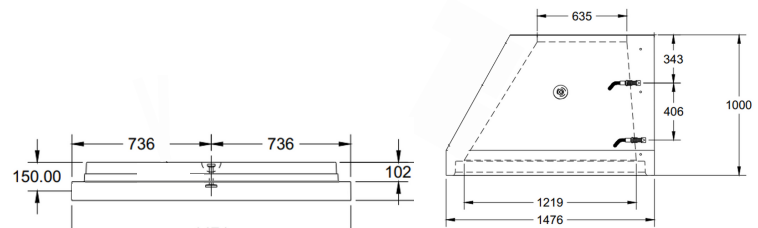
ITEM	WEIGHT (KGS)
1200MM X 0.30M BARREL	385
1200MM X 0.41M BARREL	526
1200MM X 0.81M BARREL	1040
1200MM X 1.22M BARREL	1566

1200MM TOPS AND BASES

ITEM	WEIGHT (KGS)
1200MM BASE SLAB	71
1200MM SLAB TOP W/ 635MM OPENING	95
1200MM SLAB TOP W/ 910MM OPENING	144



1200MM SLAB TOP W/ 635MM OPENING



1200MM BASE SLAB

1200MM CONE TOP

NOTES

- MHs manufactured to CSA A257.4 standards
- Custom tops with cast-in hatches or other fittings available



PREBENCHED MHs

Prebenched manhole bases come with a factory-poured base, channels, and cored openings suited to the pipe dimensions. Prebenched manholes save time and money compared to traditional cast-in-place benching on site.

Our dedicated coring machine is able to churn out a large quantity of cored barrels with core sizes ranging from 4" to 54". We provide connections for multiple pipe types, including:

- Flexible boot gaskets for smooth wall PVC pipe
- Cast-in compression gaskets typically used for large (e.g. 1350 and 1500mm) diameter plastic pipes
- Link-Seal connections
- Rough connections for concrete pipes

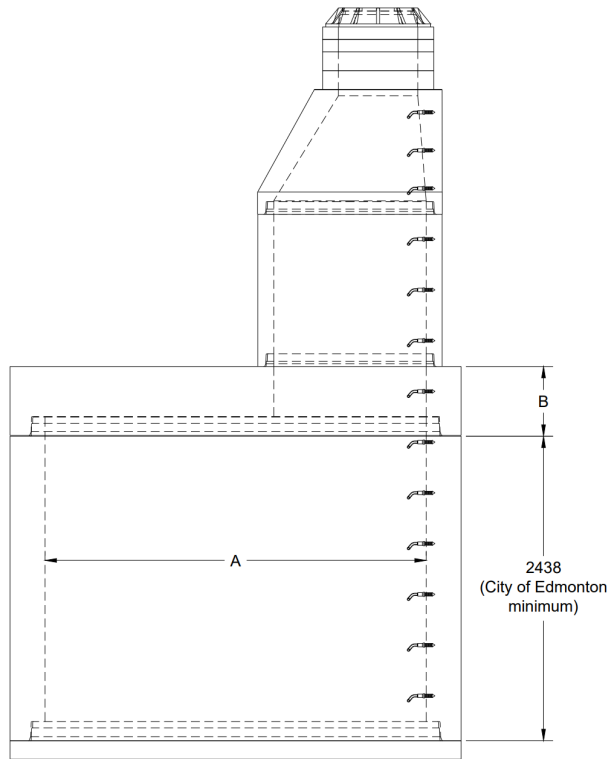


NOTES

- MHs manufactured to CSA A257.4 standards
- Custom tops with hatches or other fittings cast-in available



LARGE DIAMETER MHs



NOTES

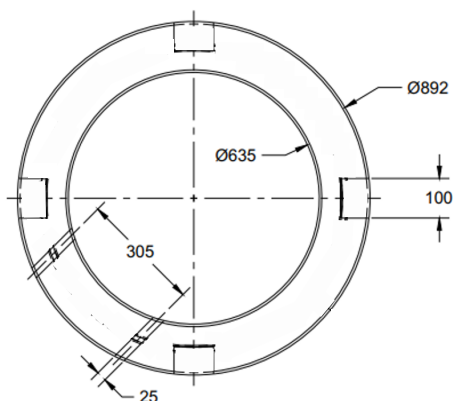
- All barrels come with self-lubricating gaskets
- Large diameter material requires larger lifting clutches to properly lift and assemble. Refer to table below
- Standard heights range between 0.61m to 2.44m
- Rough cut openings to be cut on site only after barrel is in its final position
- MHs manufactured to CSA A257.4 standards

ITEM	WEIGHT (KGS)	ID (MM) 'A'	WALL (MM)	OD (MM)	HEIGHT (MM) 'B'	LIFTING PINS
1500MM BARREL	1916/m	1524	152	1828	-	3-4T
1500MM BASE/ADAPTOR/SLABTOP	1750/1194/1753	1524	-	-	427	3-4T
1800MM BARREL	2681/m	1829	178	2185	-	3-8T
1800MM BASE/ADAPTOR/SLABTOP	2450/2087/2641	1829	-	-	427	3-8T
2100MM BARREL	3564/m	2134	203	2540	-	3-8T
2100MM BASE/ADAPTOR/SLABTOP	3344/3552/4210	2134	-	-	493	3-8T
2400MM BARREL	4557/m	2438	229	2896	-	3-8T
2400MM BASE/ADAPTOR/SLABTOP	5320/5230/5945	2438	-	-	502	3-8T
3000MM BARREL	6963/m	3048	279	3606	-	4-8T
3000MM BASE/ADAPTOR/SLABTOP	7200/9173/9946	3048	-	-	552	4-8T



GRADE RINGS

635MM DIAMETER (ID)



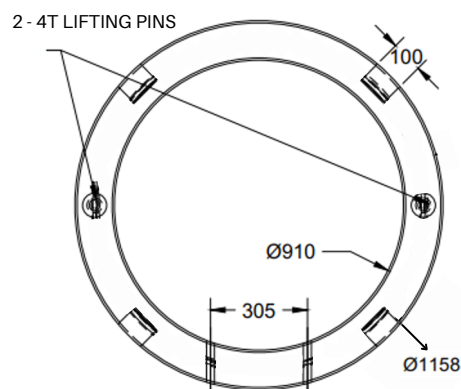
HEIGHT	WEIGHT (KGS)
2" GRADE RING	36
3" GRADE RING	54
4" GRADE RING	73
6" GRADE RING	109

NOTES

- Goes with F36, F39, F38, F33, F80, 2A, 4A, 6A & 8 frame and covers
- Available with hand holes and gasket groove

910MM DIAMETER (ID)

HEIGHT	WEIGHT (KGS)
3" GRADE RING	71
4" GRADE RING	95
6" GRADE RING	144



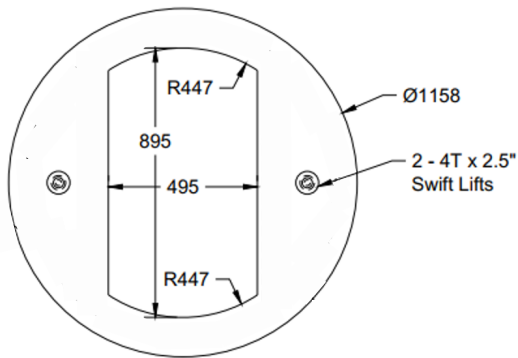
NOTES

- Goes with F41 frame and cover
- Available with hand holes and gasket groove



GRADE RINGS

DK7 RINGS



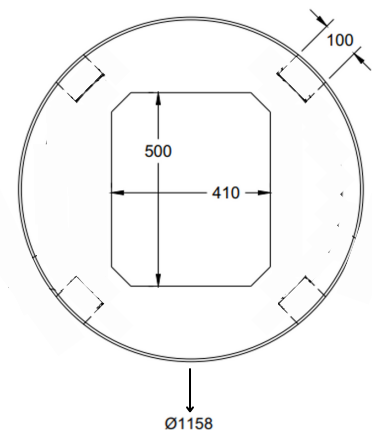
HEIGHT	WEIGHT (KGS)
3" GRADE RING	109
4" GRADE RING	145
6" GRADE RING	218

NOTES

- Goes with DK7, K7 (double) and K2 frame and covers
- Available with gasket groove

K7 RINGS

HEIGHT	WEIGHT (KGS)
3" GRADE RING	74
4" GRADE RING	99
6" GRADE RING	149



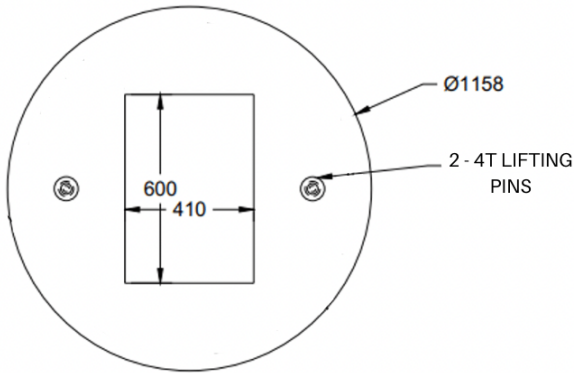
NOTES

- Goes with K7 frame and covers
- Available with hand holes and gasket groove



GRADE RINGS

K3 RINGS



HEIGHT	WEIGHT (KGS)
3" GRADE RING	141
4" GRADE RING	189
6" GRADE RING	283

NOTES

- Goes with F51 grate & TK1 frame and covers
- Available with gasket groove

525MM RINGS

HEIGHT	WEIGHT (KGS)
3" GRADE RING	38
4" GRADE RING	50
6" GRADE RING	75



NOTES

- Required for City of Edmonton projects on 2A-style frame and covers



BOX SECTIONS

Precast box sections are 4-sided concrete pieces applicable to a wide range of applications:

- Lift stations
- Vaults
- Manholes
- Culverts
- Animal or pedestrian crossings
- Stormwater storage structures

Our box sections are designed and manufactured in accordance with the requirements of ASTM C-1433 standards. With our Universal Form (UF), we have incredible flexibility in offering a range of sizes suited to your project's needs.



FEATURES AND BENEFITS

- Flexible design with an industry-leading range of available sizes
- Ability to dig wider for shallow bury applications and maintain volume requirements
- Wide range of applications



STORMWATER TANKS

Modern life offers many advantages, but its roads, driveways, parking lots, and other artificial surfaces prevent rain water and snow melt from soaking into the earth. This greatly increases the volume of runoff water created during storms and spring thaws.

Stormwater tanks work by capturing stormwater that can then be slowly released to the system. This prevents our critical infrastructure from being overwhelmed during major rainfall events. The captured stormwater can also be repurposed on site to reduce water usage. In contrast to a storm pond, these tanks allow the land above them to still be utilized for development



FEATURES AND BENEFITS

- Modular design allows flexibility in working within site constraints
- Retains valuable land above the structure
- Our 4-step technique ensures a watertight seal
- Onsite expertise in assembly offers peace of mind



PRECAST TRENCHES

Precast trenches are a versatile and dependable solution for applications such as surface drainage, water conveyance and the safe housing of critical buried infrastructure. Our trenches are manufactured in a controlled environment to CSA standards and feature a flexible design that can accommodate heavy traffic loading.

We have partnered with Trenwa Precast Trench Solutions, a leading manufacturer of precast concrete trenches, to offer a full range of precast trenches.



FEATURES AND BENEFITS

- Flexible design. 12" - 72" depths & 10"-96" widths available
- 3m (10 foot) max lengths for quick installation
- Multiple lid options – concrete, steel, FRP or grated tops
- Accessories – pipe, strut for cable supports, weld plates, etc.
- Openings and bottom drain holes available
- Designed with high strength concrete



PRECAST BARRIERS

Precast concrete barriers are a cost-effective and highly durable solution for a variety of needs. Whether you need barriers for traffic control, building berms or protection for above-ground fuel tanks, S3 Precast offers a variety of concrete barriers to suited to your project's needs.

Our barriers are manufactured to the latest CSA specifications. Our fleet of picker trucks are available to deliver concrete barriers when and where required. From standard jersey barriers to custom-shaped 'Y' barriers and more, rest assured we have the scale, throughput and expertise to meet your project's needs.



OIL & GRIT SEPARATORS

Oil and grit separator (OGS) units are vital in protecting our valuable waterways from unwanted pollutants. S3 Precast has partnered with NEXT Stormwater Solutions to offer the SDD3.

Designed and manufactured in Canada, the SDD3 by NEXT Storm is an ETV-certified, hydrodynamic oil and grit separator that utilizes both gravitational and centrifugal forces to capture and retain suspended sediments, floating particles and oils from stormwater runoff.



FEATURES AND BENEFITS

- Can be installed in series or in parallel because of its bypass system
- Strong and durable structure made in reinforced concrete able to support CL-800 loads
- Easy installation and maintenance from surface
- Double vortex to maximize the performance
- Internal aluminium components with low maintenance and excellent corrosion resistance
- Designed with high strength concrete

PRECAST FENCES

We produce and supply beautiful precast concrete walls through our TAL Stone Fence division. We are the exclusive licensee in Northern Alberta for Verti-Crete precast privacy fence and noise walls. These masonry-pattern walls combine the strength and durability of precast with the beauty of architectural stone. Precast fence applications include:

- subdivision boundaries
- commercial separation (e.g. multi-unit developments and shopping plazas)
- transportation and transit noise walls or noise barriers
- privacy fences
- public utility and industrial walls



St. Albert Trail



'Meandering River' pattern for Yellowhead Trail Freeway Conversion

FEATURES AND BENEFITS

- Visually stunning
- Range of textures, patterns and colours available
- Strength and durability of precast
- Long service life
- Excellent noise attenuation



PRECAST TANKS

Tanks-A-Lot has a rich history of supplying quality precast tanks to the Northern Alberta residential and commercial markets since 1982. We carry septic tanks, water cisterns and holding tanks in a range of sizes:

- **Cisterns and Holding Tanks** – 750 gallons up to 5000 gallons
- **Septic Tanks** – 2 bedrooms – 6 bedrooms
- **WSB Clean Treatment System** – up to 7 bedrooms



FEATURES AND BENEFITS

- Concrete or plastic (Ultra-Rib) extensions available
- Industry-leading, maintenance-free treatment plant offering
- Low profile tanks available for shallow bury
- One-stop-shop for accessories – fittings, pumps, screens, alarms etc.



iQ.MBBR™ FOR COMMERCIAL WASTEWATER TREATMENT

In partnership with Bergmann North America, we are proud to introduce iQ.MBBR™ – the next generation of Moving Bed Biofilm Reactor technology (wsb® inside) which combines robust, efficient design with smart iQ.CONTROLS™ – intelligence + quality.



1. Sludge storage / 2. Primary Clarifier

This stage provides primary treatment like a septic tank, the difference being integration with the secondary process using sludge recirculation and combined concentration of primary and secondary sludge. For small plants, the Sludge Storage is inline with the process but can be designed offline for larger plants. The Primary Clarifier is designed to remove any settleable solids from the sludge supernatant.

3. / 4. Aerobic Bioreactors

The iQ.MBBR™ secondary treatment system uses a moving bed biofilm reactor (MBBR) process containing specially designed plastic carrier media. Microorganisms attach to the carrier media and consume the organic material in the wastewater, with Bioreactor 1 adapted primarily to carbon oxidation, and Bioreactor 2 to ammonia conversion (nitrification). Oxygen is supplied by air blowers and distributed

5. Secondary Clarifier

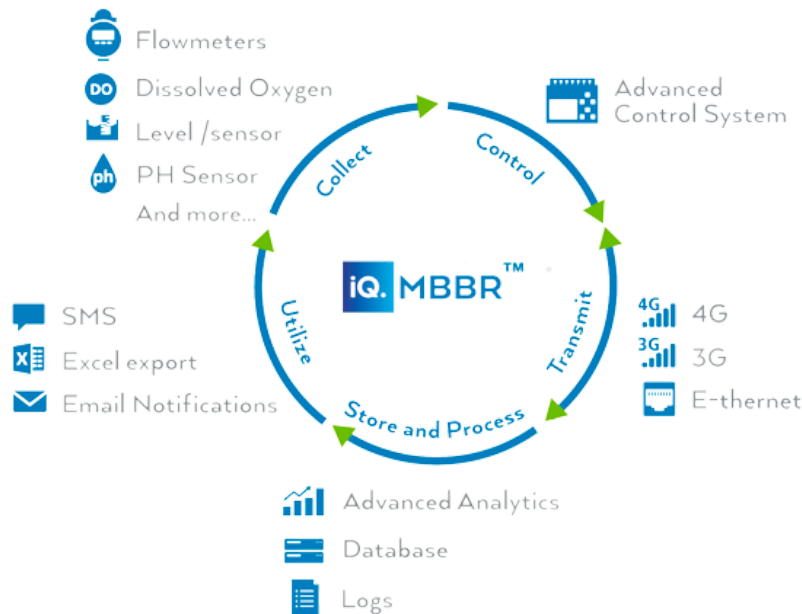
The Secondary Clarifier separates the biological solids (sludge) generated in the bioreactors by simple gravity settling into hoppers, and sludge is pumped to Sludge Storage (Stage 1).

6. Effluent Discharge

Most onsite systems discharge via effluent pump tank to subsurface infiltration but may also direct discharge to surface waters. As standards become more stringent, advanced wastewater treatment is becoming increasingly important, most commonly with respect to nitrogen and phosphorous removal, or disinfection of the effluent. The iQ.MBBR™ can be designed with a variety of modular treatment units to address higher



iQ.MBBR™ FOR COMMERCIAL WASTEWATER TREATMENT



iQ.MBBR™

The iQ.MBBR™ systems offer a custom designed solution which can be installed in a small footprint with low energy and operating costs. Advantages include:

- Exceptional treatment of varying hydraulic, organic and nutrient loads
- Reliable pure biofilm process with minimal operational requirements
- Comprehensive remote monitoring and control = optimum system management

iQ.CONTROLS™

With the iQ.CONTROLS™ powered by the click+clean® platform, we provide a unique control unit for the power and automatic control of the wastewater treatment system

- Each control panel comes standard with GPRS remote monitoring and data logging
- Instantly receive alarm notifications and remotely adjust the settings





OUR TEAM

AMIR AZIZI, MBA, P.ENG	PRESIDENT	AMIR@S3PRECAST.COM	780-245-5849
JUSTIN GOERTZEN, P.ENG	VP, SALES & MARKETING	JUSTIN@S3PRECAST.COM	780-977-2843
SHAWN INNES	VP, MANUFACTURING	SHAWN@TANKS-A-LOT.COM	780-977-3345
MIKE IRWIN	BUSINESS DEVELOPMENT	MIKE@TANKS-A-LOT.COM	780-953-2012
PAUL TANGUAY	BUSINESS DEVELOPMENT	PAUL@TANKS-A-LOT.COM	780-720-7489
VINCENT TAT, EIT	ESTIMATOR/PROJECT MANAGER	VINCENT@S3PRECAST.COM	780-940-2628
JOSEPH KAUP, P.ENG	ESTIMATOR/PROJECT MANAGER	JOE@S3PRECAST.COM	780-977-3094
VINCENZO YUMUL, CET	ESTIMATOR/PROJECT MANAGER	VINCENZO@S3PRECAST.COM	780-242-4239
EMILY PONCE, PCI- CERTIFIED INSPECTOR	QUALITY CONTROL MANAGER	EMILY@TANKS-A-LOT.COM	780-977-3142
JEFF JONES, CPA	CONTROLLER	JEFF@TANKS-A-LOT.COM	780-220-1563

DRIVING DIRECTIONS

- From Hwy 16 (Yellowhead Trail), take exit 403 heading north onto RR 232/Sherwood Drive
- Cross the first set of train tracks and we're the first turn off on the east



TANKS-A-LOT

780-472-8265

53251 RR 232, SHERWOOD PARK, AB