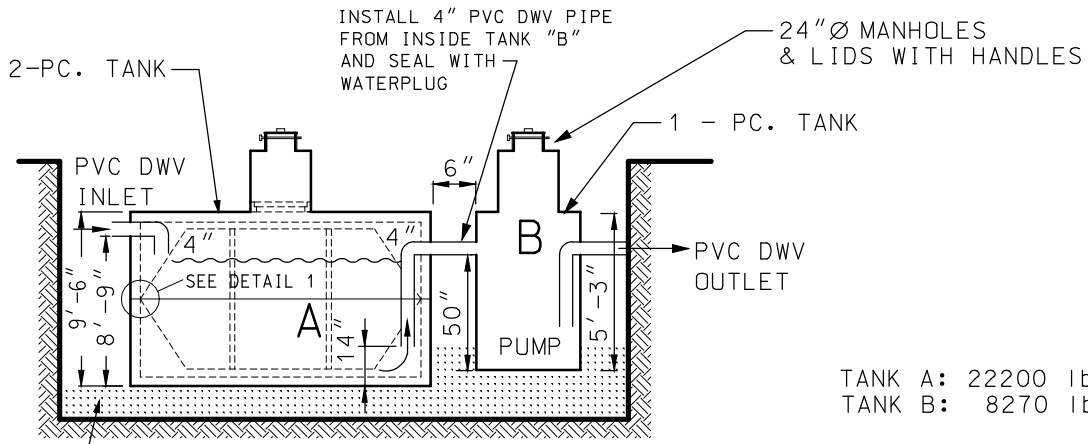


**PLAN VIEW**



**ELEVATION VIEW**

4" OF -1" CRUSHED  
WASHED ROCK LEVELLED

**NOTES:**

- IF TANKS ARE NOT INSTALLED DIRECTLY INTO THE EXCAVATION AS RECOMMENDED IN OUR "TERMS & CONDITIONS", THEN PLEASE STORE ON TIMBERS TO PREVENT BREAKAGE AND FREEZING TO THE GROUND.
- TANK "A" IS LIFTED BY:
  - BOTTOM SECTION- A SLING OR CHAIN AROUND TANK JUST UNDER THICKENED PART NEAR THE TANK TOP.
  - TOP SECTION MUST BE LEVEL & GUIDED PRECISELY ONTO BUTYL SEALANT WHICH IS PLACED ON A DUST, WATER & ICE FREE SURFACE.
- IN A HIGH WATER TABLE, CONTRACTOR MUST SEAL ALL JOINTS WITH TANK MASTIC ON THE OUTSIDE OF THE TANKS.
- MAXIMUM EARTH COVER IS FIVE FEET.
- ALL INTERNAL BAFFLING AND DAMS DETAIL NOT SHOWN.



1810 Yellowhead Trail N.E.  
Edmonton, AB T6S 1B4

p 780.472.8265  
f 780.478.5699  
tf 800.661.5667

info@tanks-a-lot.com  
www.tanks-a-lot.com

DRAWN	CHECK	PENG.	ISSUED FOR	DATE	REV
TYPICAL MODEL 4720 OIL/ WATER SEPARATOR					
WIDTH:		LENGTH:		HEIGHT:	
GAL:		LITRES:		EARTH COVER: 5ft or 1.5m max	
WEIGHT	LBS.		DRAWING NO.		REV
	TANK A	22200	4720	OW	A
TANK B	8270				